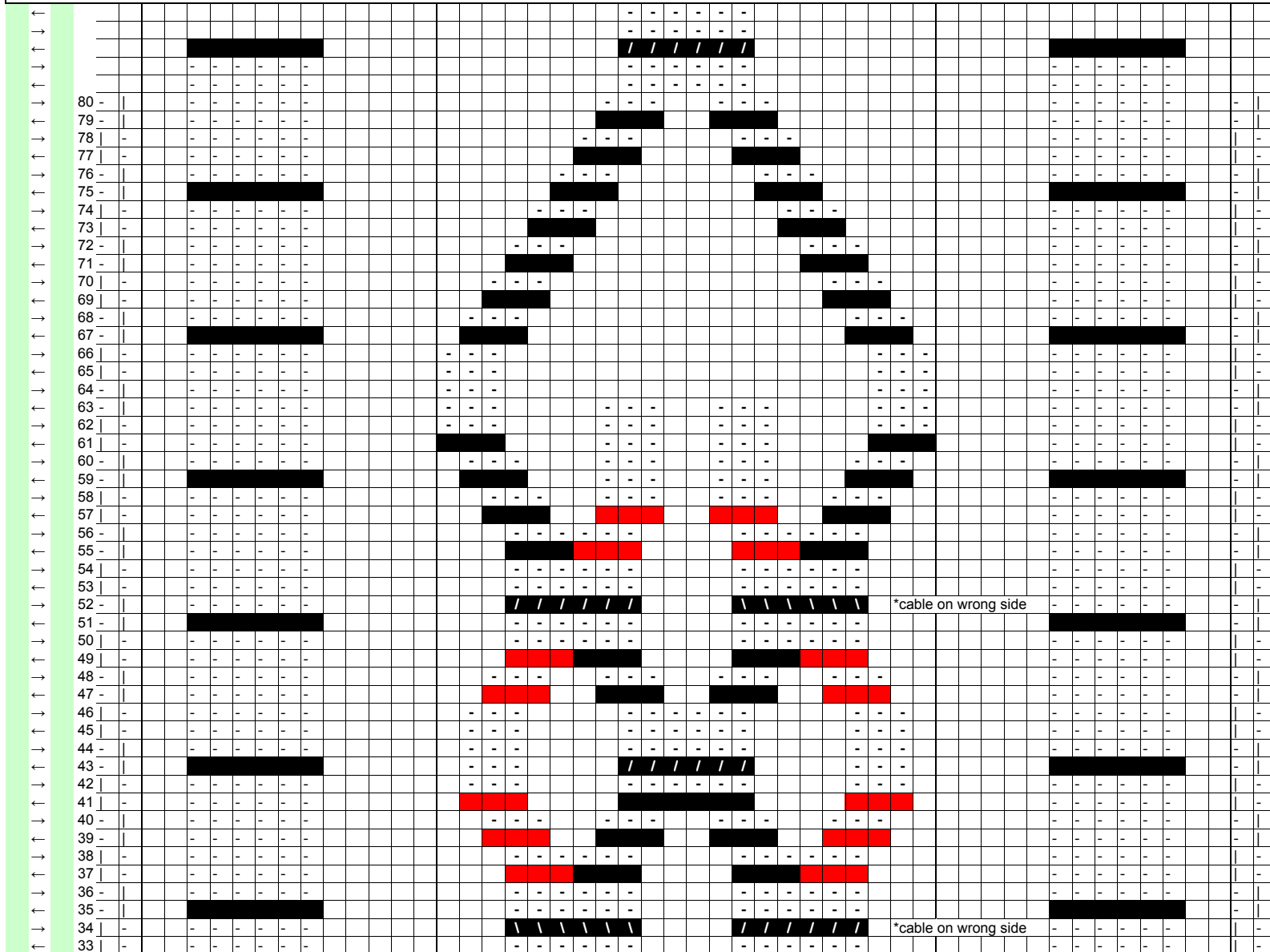


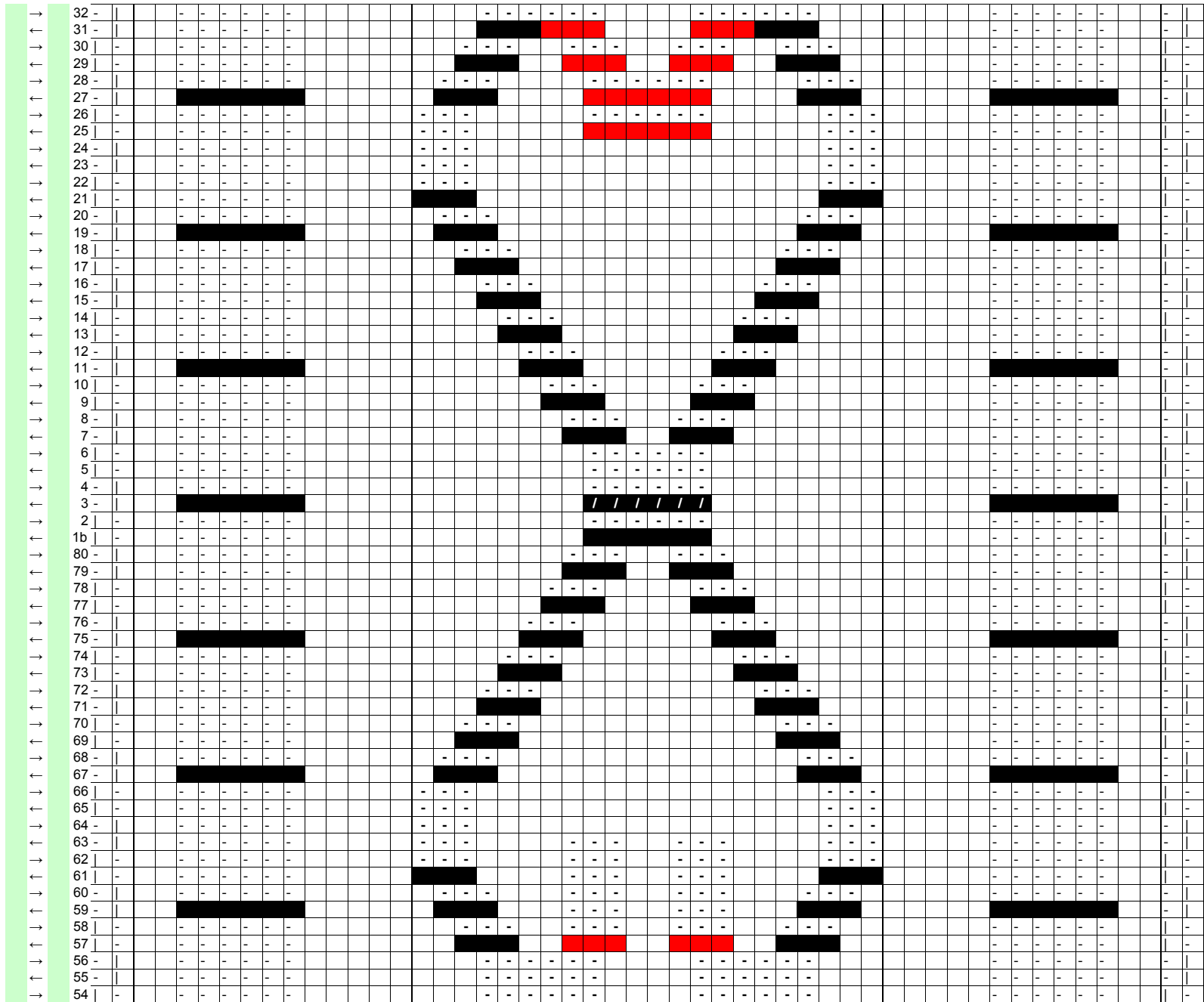
Big Damn Cable Pattern

Notes: The front of the sweater should end at about row 59 of the second repeat, the back of the sweater should end about row 70, give or take some. Do not work in different color threads, I did red and black to keep from going insane while I was trying to figure out the crosses. The cables are ONLY where the / marks are, everything else is a travelling cable. To Cr4R, work to one stitch before the three knit stitches. Slip the remaining purl stitch onto the cable needle and leave it at the back of the work. Knit the next three stitches, then purl the stitch from your cable needle. This makes a cable that travels to the right. To Cr4L, work to the three knit stitches. Transfer them to a cable needle and leave them at the front of the work. Purl the next stitch, then knit the three stitches from the cable needle. This makes your cable travel left.

The background should be all purl stitch. The double moss section should be made as wide as necessary to fit, as can the 5 purls between the simple cables to the sides and the primary design. I'm assuming a row gauge of 6.4 rows to the inch, for a finished back height of 25 inches (oh, do 10 rows of 1x1 cable first, THEN start the cabling. Or not). The section that I did in double moss stitch should probably be done in trinity or blackberry, but I loathe both of those, so I did the cheater method that's not quite as bumpedy, but is way easier.



Big Damn Cable Pattern



←					
→					
←					
→					
←			P8, C6B, P8		
→			K8, P6, K8		
←			P7, Cr4L, Cr4R, P7		
→	80 P1, K1	K2, P6, K5	K7, P3, K2, P3, K7	K5, P6, K5	P1, K1
←	79 P1, K1	P2, K6, P5	P6, Cr4L, P2, Cr4R, P6	P5, k6, P2	P1, K1
→	78 K1,P1	K2, P6, K5	K6, P3, K4, P3, K6	K5, P6, K5	K1,P1
←	77 K1,P1	P2, K6, P5	P5, Cr4L, P4, Cr4R, P5	P5, k6, P2	K1,P1
→	76 P1, K1	K2, P6, K5	K5, P3, K6, P3, K5	K5, P6, K5	P1, K1
←	75 P1, K1	P2, C6B, P5	P4, Cr4L, P6, Cr4R, P4	P5, C6B, P2	P1, K1
→	74 K1,P1	K2, P6, K5	K4, P3, K8, P3, K4	K5, P6, K5	K1,P1
←	73 K1,P1	P2, K6, P5	P3, Cr4L, P8, Cr4R, P3	P5, k6, P2	K1,P1
→	72 P1, K1	K2, P6, K5	K3, P3, K10, P3, K3	K5, P6, K5	P1, K1
←	71 P1, K1	P2, K6, P5	P2, Cr4L, P10, Cr4R, P2	P5, k6, P2	P1, K1
→	70 K1,P1	K2, P6, K5	K2, P3, K12, P3, K2	K5, P6, K5	K1,P1
←	69 K1,P1	P2, K6, P5	P1, Cr4L, P12, Cr4R, P1	P5, k6, P2	K1,P1
→	68 P1, K1	K2, P6, K5	K1, P3, K14, P3, K1	K5, P6, K5	P1, K1
←	67 P1, K1	P2, C6B, P5	Cr4L, P14, Cr4R	P5, C6B, P2	P1, K1
→	66 K1,P1	K2, P6, K5	P3, K16, P3	K5, P6, K5	K1,P1
←	65 K1,P1	P2, K6, P5	K3, P16, K3	P5, k6, P2	K1,P1
→	64 P1, K1	K2, P6, K5	P3, K16, P3	K5, P6, K5	P1, K1
←	63 P1, K1	P2, K6, P5	K3, P4, K3, P2, K3, P4, K3	P5, k6, P2	P1, K1
→	62 K1,P1	K2, P6, K5	P3, K4, P3, K2, P3, K4, P3	K5, P6, K5	K1,P1
←	61 K1,P1	P2, K6, P5	Cr4r, P3, K3, P2, K3, P3, Cr4L	P5, k6, P2	K1,P1
→	60 P1, K1	K2, P6, K5	K1, P3, K3, P3, K2, P3, K3, P3, K1	K5, P6, K5	P1, K1
←	59 P1, K1	P2, C6B, P5	P1, Cr4R, P2, K3, P2, K3, P2, Cr4L, P1	P5, C6B, P2	P1, K1
→	58 K1,P1	K2, P6, K5	K2, P3, K2, P3, K2, P3, K2, P3, K2	K5, P6, K5	K1,P1
←	57 K1,P1	P2, K6, P5	P2, Cr4R, Cr4L, P2, Cr4R, Cr4L, P2	P5, k6, P2	K1,P1
→	56 P1, K1	K2, P6, K5	K3, P6, K4, P6, K3	K5, P6, K5	P1, K1
←	55 P1, K1	P2, K6, P5	P3, K6, P4, K6, P3	P5, k6, P2	P1, K1
→	54 K1,P1	K2, P6, K5	K3, P6, K4, P6, K3	K5, P6, K5	K1,P1
←	53 K1,P1	P2, K6, P5	P3, K6, P4, K6, P3	P5, k6, P2	K1,P1
→	52 P1, K1	K2, P6, K5	K3, C6B (as purl), K4, C6F (as purl), K3	K5, P6, K5	P1, K1
←	51 P1, K1	P2, C6B, P5	P3, K6, P4, K6, P3	P5, C6B, P2	P1, K1
→	50 K1,P1	K2, P6, K5	K3, P6, K4, P6, K3	K5, P6, K5	K1,P1
←	49 K1,P1	P2, K6, P5	P2, Cr4L, Cr4R, P2, Cr4L, Cr4R, P2	P5, k6, P2	K1,P1
→	48 P1, K1	K2, P6, K5	K2, P3, K2, P3, K2, P3, K2, P3, K2	K5, P6, K5	P1, K1
←	47 P1, K1	P2, K6, P5	P1, Cr4L, P2, Cr4R, Cr4L, P2, Cr4R, P1	P5, k6, P2	P1, K1
→	46 K1,P1	K2, P6, K5	K1, P3, K4, P6, K4, P3, K1	K5, P6, K5	K1,P1
←	45 K1,P1	P2, K6, P5	P1, K3, P4, K6, P4, K3, P1	P5, k6, P2	K1,P1
→	44 P1, K1	K2, P6, K5	K1, P3, K4, P6, K4, P3, K1	K5, P6, K5	P1, K1
←	43 P1, K1	P2, C6B, P5	P1, K3, P4, C6B, P4, K3, P1	P5, C6B, P2	P1, K1
→	42 K1,P1	K2, P6, K5	K1, P3, K4, P6, K4, P3, K1	K5, P6, K5	K1,P1
←	41 K1,P1	P2, K6, P5	P1, Cr4R, P2, Cr4L, Cr4R, P2, Cr4L, P1	P5, k6, P2	K1,P1
→	40 P1, K1	K2, P6, K5	K2, P3, K2, P3, K2, P3, K2, P3, K2	K5, P6, K5	P1, K1
←	39 P1, K1	P2, K6, P5	P2, Cr4R, Cr4L, P2, Cr4R, Cr4L, P2	P5, k6, P2	P1, K1
→	38 K1,P1	K2, P6, K5	K3, P6, K4, P6, K3	K5, P6, K5	K1,P1
←	37 K1,P1	P2, K6, P5	P3, K6, P4, K6, P3	P5, k6, P2	K1,P1
→	36 P1, K1	K2, P6, K5	K3, P6, K4, P6, K3	K5, P6, K5	P1, K1
←	35 P1, K1	P2, C6B, P5	P3, K6, P4, K6, P3	P5, C6B, P2	P1, K1
→	34 K1,P1	K2, P6, K5	K3, C6F (as purl), K4, C6B (as purl), K3	K5, P6, K5	K1,P1
←	33 K1,P1	P2, K6, P5	P3, K6, P4, K6, P3	P5, k6, P2	K1,P1

Notes: The front of the sweater

Big Damn Cable Pattern

→	32 P1, K1	K2, P6, K5	K3, P6, K4, P6, K3	K5, P6, K5	P1, K1
←	31 P1, K1	P2, K6, P5	P2, Cr4L, Cr4R, P2, Cr4L, Cr4R, P2	P5, k6, P2	P1, K1
→	30 K1,P1	K2, P6, K5	K2, P3, K2, P3, K2, P3, K2, P3, K2	K5, P6, K5	K1,P1
←	29 K1,P1	P2, K6, P5	P1, Cr4L, P2, K3, P2, K3, P2, Cr4R, P1	P5, k6, P2	K1,P1
→	28 P1, K1	K2, P6, K5	K1, P3, K3, P3, K2, P3, K3, P3, K1	K5, P6, K5	P1, K1
←	27 P1, K1	P2, C6B, P5	Cr4L, P3, K3, P2, K3, P3, Cr4R	P5, C6B, P2	P1, K1
→	26 K1,P1	K2, P6, K5	P3, K4, P3, K2, P3, K4, P3	K5, P6, K5	K1,P1
←	25 K1,P1	P2, K6, P5	K3, P4, K3, P2, K3, P4, K3	P5, k6, P2	K1,P1
→	24 P1, K1	K2, P6, K5	P3, K4, P3, K2, P3, K4, P3	K5, P6, K5	P1, K1
←	23 P1, K1	P2, K6, P5	K3, P4, K3, P2, K3, P4, K3	P5, k6, P2	P1, K1
→	22 K1,P1	K2, P6, K5	P3, K16, P3	K5, P6, K5	K1,P1
←	21 K1,P1	P2, K6, P5	Cr4R, P14, Cr4L	P5, k6, P2	K1,P1
→	20 P1, K1	K2, P6, K5	K1, P3, K14, P3, K1	K5, P6, K5	P1, K1
←	19 P1, K1	P2, C6B, P5	P1, Cr4R, P12, Cr4L, P1	P5, C6B, P2	P1, K1
→	18 K1,P1	K2, P6, K5	K2, P3, K12, P3, K2	K5, P6, K5	K1,P1
←	17 K1,P1	P2, K6, P5	P2, Cr4R, P10, Cr4L, P2	P5, k6, P2	K1,P1
→	16 P1, K1	K2, P6, K5	K3, P3, K10, P3, K3	K5, P6, K5	P1, K1
←	15 P1, K1	P2, K6, P5	P3, Cr4R, P8, Cr4L, P3	P5, k6, P2	P1, K1
→	14 K1,P1	K2, P6, K5	K4, P3, K8, P3, K4	K5, P6, K5	K1,P1
←	13 K1,P1	P2, K6, P5	P4, Cr4R, P6, Cr4L, K4	P5, k6, P2	K1,P1
→	12 P1, K1	K2, P6, K5	K5, P3, K6, P3, K5	K5, P6, K5	P1, K1
←	11 P1, K1	P2, C6B, P5	P5, Cr4r, P4, Cr4L, P5	P5, C6B, P2	P1, K1
→	10 K1,P1	K2, P6, K5	K6, P3, K4, P3, K6	K5, P6, K5	K1,P1
←	9 K1,P1	P2, K6, P5	P6, Cr4R, P2, Cr4L, P6	P5, k6, P2	K1,P1
→	8 P1, K1	K2, P6, K5	K7, P3, K2, P3, K7	K5, P6, K5	P1, K1
←	7 P1, K1	P2, K6, P5	P7, Cr4R, Cr4L, P7	P5, k6, P2	P1, K1
→	6 K1,P1	K2, P6, K5	K8, P6, K8	K5, P6, K5	K1,P1
←	5 K1,P1	P2, K6, P5	P8, K6, P8	P5, k6, P2	K1,P1
→	4 P1, K1	K2, P6, K5	K8, P6, K8	K5, P6, K5	P1, K1
←	3 P1, K1	P2, C6B, P5	P8, C6B, P8	P5, C6B, P2	P1, K1
→	2 K1,P1	K2, P6, K5	K8, P6, K8	K5, P6, K5	K1,P1
←	1b K1,P1	P2, K6, P5	P7, Cr4L, Cr4R, P7	P5, k6, P2	K1,P1
→	80 P1, K1	K2, P6, K5	K7, P3, K2, P3, K7	K5, P6, K5	P1, K1
←	79 P1, K1	P2, K6, P5	P6, Cr4L, P2, Cr4R, P6	P5, k6, P2	P1, K1
→	78 K1,P1	K2, P6, K5	K6, P3, K4, P3, K6	K5, P6, K5	K1,P1
←	77 K1,P1	P2, K6, P5	P5, Cr4L, P4, Cr4R, P5	P5, k6, P2	K1,P1
→	76 P1, K1	K2, P6, K5	K5, P3, K6, P3, K5	K5, P6, K5	P1, K1
←	75 P1, K1	P2, C6B, P5	P4, Cr4L, P6, Cr4R, P4	P5, C6B, P2	P1, K1
→	74 K1,P1	K2, P6, K5	K4, P3, K8, P3, K4	K5, P6, K5	K1,P1
←	73 K1,P1	P2, K6, P5	P3, Cr4L, P8, Cr4R, P3	P5, k6, P2	K1,P1
→	72 P1, K1	K2, P6, K5	K3, P3, K10, P3, K3	K5, P6, K5	P1, K1
←	71 P1, K1	P2, K6, P5	P2, Cr4L, P10, Cr4R, P2	P5, k6, P2	P1, K1
→	70 K1,P1	K2, P6, K5	K2, P3, K12, P3, K2	K5, P6, K5	K1,P1
←	69 K1,P1	P2, K6, P5	P1, Cr4L, P12, Cr4R, P1	P5, k6, P2	K1,P1
→	68 P1, K1	K2, P6, K5	K1, P3, K14, P3, K1	K5, P6, K5	P1, K1
←	67 P1, K1	P2, C6B, P5	Cr4L, P14, Cr4R	P5, C6B, P2	P1, K1
→	66 K1,P1	K2, P6, K5	P3, K16, P3	K5, P6, K5	K1,P1
←	65 K1,P1	P2, K6, P5	K3, P16, K3	P5, k6, P2	K1,P1
→	64 P1, K1	K2, P6, K5	P3, K16, P3	K5, P6, K5	P1, K1
←	63 P1, K1	P2, K6, P5	K3, P4, K3, P2, K3, P4, K3	P5, k6, P2	P1, K1
→	62 K1,P1	K2, P6, K5	P3, K4, P3, K2, P3, K4, P3	K5, P6, K5	K1,P1
←	61 K1,P1	P2, K6, P5	Cr4r, P3, K3, P2, K3, P3, Cr4L	P5, k6, P2	K1,P1
→	60 P1, K1	K2, P6, K5	K1, P3, K3, P3, K2, P3, K3, P3, K1	K5, P6, K5	P1, K1
←	59 P1, K1	P2, C6B, P5	P1, Cr4R, P2, K3, P2, K3, P2, Cr4L, P1	P5, C6B, P2	P1, K1
→	58 K1,P1	K2, P6, K5	K2, P3, K2, P3, K2, P3, K2, P3, K2	K5, P6, K5	K1,P1
←	57 K1,P1	P2, K6, P5	P2, Cr4R, Cr4L, P2, Cr4R, Cr4L, P2	P5, k6, P2	K1,P1
→	56 P1, K1	K2, P6, K5	K3, P6, K4, P6, K3	K5, P6, K5	P1, K1
←	55 P1, K1	P2, K6, P5	P3, K6, P4, K6, P3	P5, k6, P2	P1, K1
→	54 K1,P1	K2, P6, K5	K3, P6, K4, P6, K3	K5, P6, K5	K1,P1

Big Damn Cable Pattern

←	53 K1,P1	P2, K6, P5	P3, K6, P4, K6, P3	P5, k6, P2	K1,P1
→	52 P1, K1	K2, P6, K5	K3, C6B (as purl), K4, C6F (as purl), K3	K5, P6, K5	P1, K1
←	51 P1, K1	P2, C6B, P5	P3, K6, P4, K6, P3	P5, C6B, P2	P1, K1
→	50 K1,P1	K2, P6, K5	K3, P6, K4, P6, K3	K5, P6, K5	K1,P1
←	49 K1,P1	P2, K6, P5	P2, Cr4L, Cr4R, P2, Cr4L, Cr4R, P2	P5, k6, P2	K1,P1
→	48 P1, K1	K2, P6, K5	K2, P3, K2, P3, K2, P3, K2, P3, K2	K5, P6, K5	P1, K1
←	47 P1, K1	P2, K6, P5	P1, Cr4L, P2, Cr4R, Cr4L, P2, Cr4R, P1	P5, k6, P2	P1, K1
→	46 K1,P1	K2, P6, K5	K1, P3, K4, P6, K4, P3, K1	K5, P6, K5	K1,P1
←	45 K1,P1	P2, K6, P5	P1, K3, P4, K6, P4, K3, P1	P5, k6, P2	K1,P1
→	44 P1, K1	K2, P6, K5	K1, P3, K4, P6, K4, P3, K1	K5, P6, K5	P1, K1
←	43 P1, K1	P2, C6B, P5	P1, K3, P4, C6B, P4, K3, P1	P5, C6B, P2	P1, K1
→	42 K1,P1	K2, P6, K5	K1, P3, K4, P6, K4, P3, K1	K5, P6, K5	K1,P1
←	41 K1,P1	P2, K6, P5	P1, Cr4R, P2, Cr4L, Cr4R, P2, Cr4L, P1	P5, k6, P2	K1,P1
→	40 P1, K1	K2, P6, K5	K2, P3, K2, P3, K2, P3, K2, P3, K2	K5, P6, K5	P1, K1
←	39 P1, K1	P2, K6, P5	P2, Cr4R, Cr4L, P2, Cr4R, Cr4L, P2	P5, k6, P2	P1, K1
→	38 K1,P1	K2, P6, K5	K3, P6, K4, P6, K3	K5, P6, K5	K1,P1
←	37 K1,P1	P2, K6, P5	P3, K6, P4, K6, P3	P5, k6, P2	K1,P1
→	36 P1, K1	K2, P6, K5	K3, P6, K4, P6, K3	K5, P6, K5	P1, K1
←	35 P1, K1	P2, C6B, P5	P3, K6, P4, K6, P3	P5, C6B, P2	P1, K1
→	34 K1,P1	K2, P6, K5	K3, C6F (as purl), K4, C6B (as purl), K3	K5, P6, K5	K1,P1
←	33 K1,P1	P2, K6, P5	P3, K6, P4, K6, P3	P5, k6, P2	K1,P1
→	32 P1, K1	K2, P6, K5	K3, P6, K4, P6, K3	K5, P6, K5	P1, K1
←	31 P1, K1	P2, K6, P5	P2, Cr4L, Cr4R, P2, Cr4L, Cr4R, P2	P5, k6, P2	P1, K1
→	30 K1,P1	K2, P6, K5	K2, P3, K2, P3, K2, P3, K2, P3, K2	K5, P6, K5	K1,P1
←	29 K1,P1	P2, K6, P5	P1, Cr4L, P2, K3, P2, K3, P2, Cr4R, P1	P5, k6, P2	K1,P1
→	28 P1, K1	K2, P6, K5	K1, P3, K3, P3, K2, P3, K3, P3, K1	K5, P6, K5	P1, K1
←	27 P1, K1	P2, C6B, P5	Cr4L, P3, K3, P2, K3, P3, Cr4R	P5, C6B, P2	P1, K1
→	26 K1,P1	K2, P6, K5	P3, K4, P3, K2, P3, K4, P3	K5, P6, K5	K1,P1
←	25 K1,P1	P2, K6, P5	K3, P4, K3, P2, K3, P4, K3	P5, k6, P2	K1,P1
→	24 P1, K1	K2, P6, K5	P3, K4, P3, K2, P3, K4, P3	K5, P6, K5	P1, K1
←	23 P1, K1	P2, K6, P5	K3, P4, K3, P2, K3, P4, K3	P5, k6, P2	P1, K1
→	22 K1,P1	K2, P6, K5	P3, K16, P3	K5, P6, K5	K1,P1
←	21 K1,P1	P2, K6, P5	Cr4R, P14, Cr4L	P5, k6, P2	K1,P1
→	20 P1, K1	K2, P6, K5	K1, P3, K14, P3, K1	K5, P6, K5	P1, K1
←	19 P1, K1	P2, C6B, P5	P1, Cr4R, P12, Cr4L, P1	P5, C6B, P2	P1, K1
→	18 K1,P1	K2, P6, K5	K2, P3, K12, P3, K2	K5, P6, K5	K1,P1
←	17 K1,P1	P2, K6, P5	P2, Cr4R, P10, Cr4L, P2	P5, k6, P2	K1,P1
→	16 P1, K1	K2, P6, K5	K3, P3, K10, P3, K3	K5, P6, K5	P1, K1
←	15 P1, K1	P2, K6, P5	P3, Cr4R, P8, Cr4L, P3	P5, k6, P2	P1, K1
→	14 K1,P1	K2, P6, K5	K4, P3, K8, P3, K4	K5, P6, K5	K1,P1
←	13 K1,P1	P2, K6, P5	P4, Cr4R, P6, Cr4L, K4	P5, k6, P2	K1,P1
→	12 P1, K1	K2, P6, K5	K5, P3, K6, P3, K5	K5, P6, K5	P1, K1
←	11 P1, K1	P2, C6B, P5	P5, Cr4r, P4, Cr4L, P5	P5, C6B, P2	P1, K1
→	10 K1,P1	K2, P6, K5	K6, P3, K4, P3, K6	K5, P6, K5	K1,P1
←	9 K1,P1	P2, K6, P5	P6, Cr4R, P2, Cr4L, P6	P5, k6, P2	K1,P1
→	8 P1, K1	K2, P6, K5	K7, P3, K2, P3, K7	K5, P6, K5	P1, K1
←	7 P1, K1	P2, K6, P5	P7, Cr4R, Cr4L, P7	P5, k6, P2	P1, K1
→	6 K1,P1	K2, P6, K5	K8, P6, K8	K5, P6, K5	K1,P1
←	5 K1,P1	P2, K6, P5	P8, K6, P8	P5, k6, P2	K1,P1
→	4 P1, K1	K2, P6, K5	K8, P6, K8	K5, P6, K5	P1, K1
←	3 P1, K1	P2, C6B, P5	P8, K6, P8	P5, C6B, P2	P1, K1
→	2 K1,P1	K2, P6, K5	K8, P6, K8	K5, P6, K5	K1,P1
←	1a K1,P1	P2, K6, P5	P8, K6, P8	P5, k6, P2	K1,P1

d	double	cable	main cable	cable	double
i	moss,				moss,
r	repeat as				repeat as
	necessary				necessary
o	for width				for width
f	(probably				(probably
	5-10				5-10
k	repeats)				repeats)
n					
i					
t					